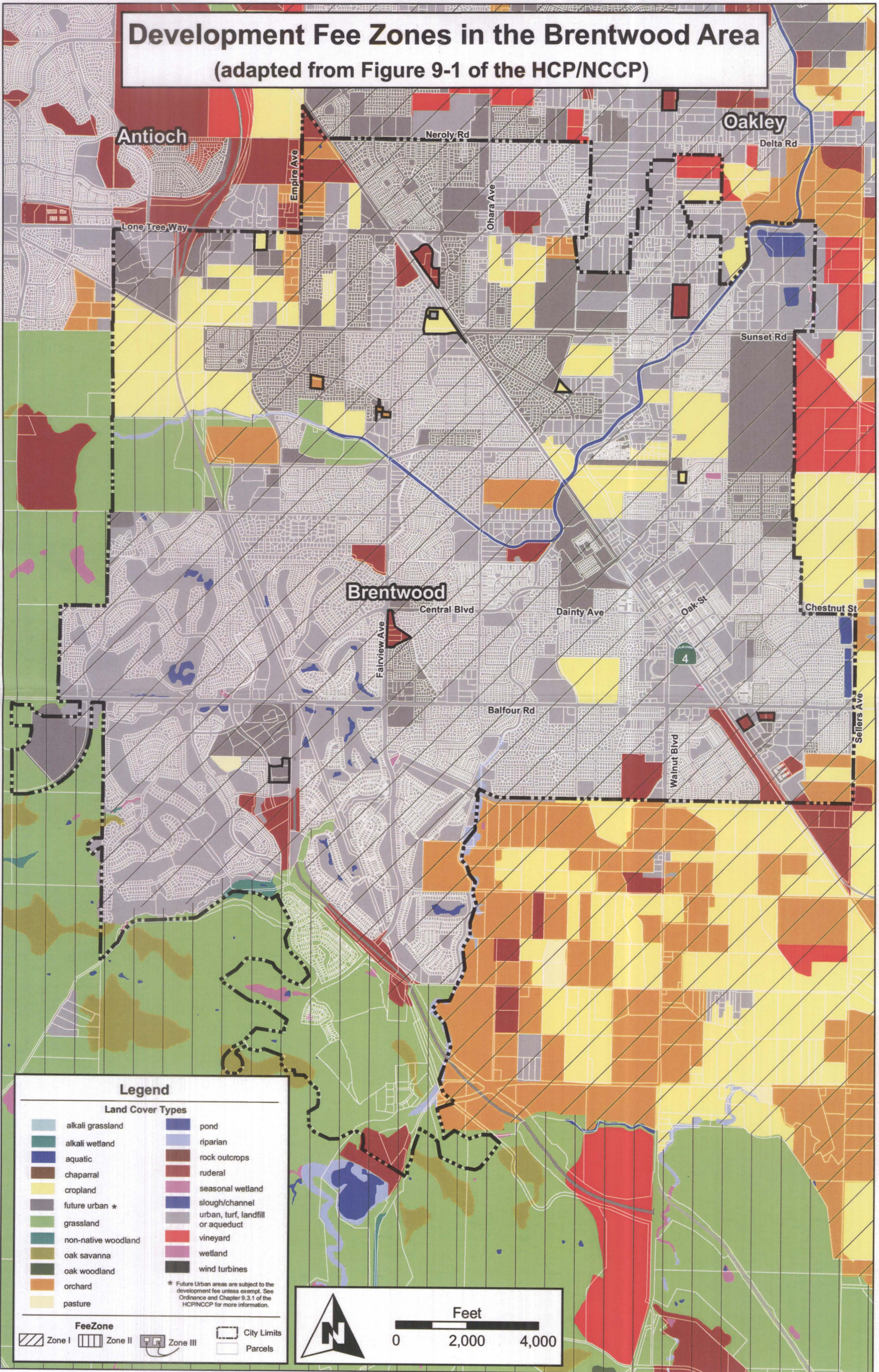


Development Fee Zones in the Brentwood Area

(adapted from Figure 9-1 of the HCP/NCCP)



Legend

Land Cover Types

- | | | | |
|--|---------------------|--|-----------------------------------|
| | alkali grassland | | pond |
| | alkali wetland | | riparian |
| | aquatic | | rock outcrops |
| | chaparral | | ruderal |
| | cropland | | seasonal wetland |
| | future urban * | | slough/channel |
| | grassland | | urban, turf, landfill or aqueduct |
| | non-native woodland | | vineyard |
| | oak savanna | | wetland |
| | oak woodland | | wind turbines |
| | orchard | | |
| | pasture | | |

* Future Urban areas are subject to the development fee unless exempt. See Ordinance and Chapter 9.3.1 of the HCP/NCCP for more information.

FeeZone

- | | | | | | | | |
|--|---------|--|---------|--|----------|--|-------------|
| | Zone I | | Zone II | | Zone III | | City Limits |
| | Parcels | | | | | | |

