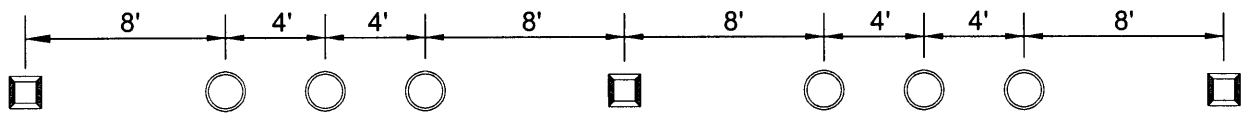


45 MPH AND OVER



UNDER 45 MPH

LEGEND:

 TYPE 'C' WHITE-RED REFLECTIVE MARKER

 TYPE 'A' NON-REFLECTIVE MARKER



**ENGINEERING
DEPARTMENT**

LANELINE STRIPING


BALWINDER S. GREWAL CITY ENGINEER

DATE: AUG. 19, 2004

REVISED: APR. 29, 2005

SHEET NO.

ST-35