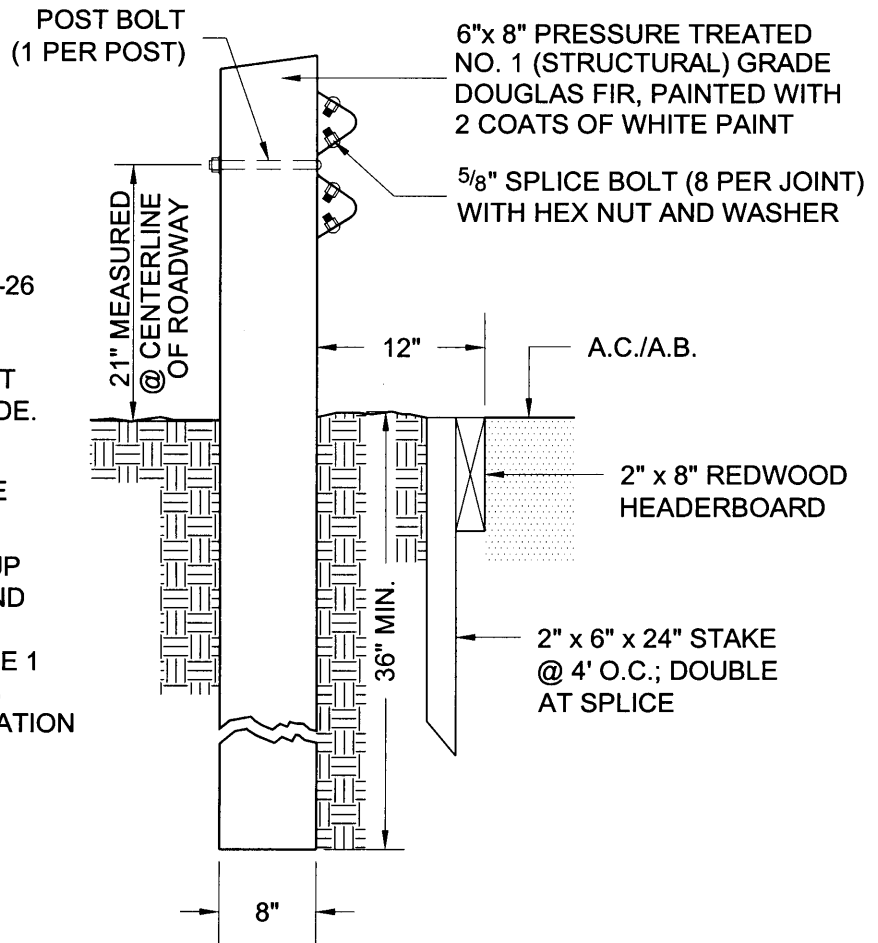


**NOTES:**

1. TYPE N-5 REFLECTOR AND R-26 SIGN ON A 4"x 4" REDWOOD POST, LAG BOLTED (MIN. 3 BOLTS) TO BARRICADE POST JUST BEHIND THE BARRICADE.
2. BOTTOM OF SIGNS SHALL BE EVEN WITH THE TOP OF THE GUARD RAIL.
3. THE RAIL ELEMENTS, BACK-UP PLATES, TERMINAL, END, AND RETURN SECTIONS SHALL CONFORM TO CLASS A, TYPE 1 W-BEAM GUARD RAILING AS SHOWN IN AASHTO DESIGNATION M180.



(Not To Scale)



**ENGINEERING  
DEPARTMENT**

**STREET BARRICADE**

*John E. Stevenson*  
JOHN E. STEVENSON CITY ENGINEER

DATE: NOV. 30, 1998  
REVISED: OCT. 31, 2000

SHEET NO.  
**ST-16**