

1-3/4" O.D. SIGN POST*
(LENGTH VARIES)

1 OR 2 HOLES
EXPOSED (2" MAX.)

GROUND OR
SURFACE
(TRAFFIC
SIDE)

DRIVE RIVET
10" MIN. FROM
TOP OF SLEEVE
(TO ANCHOR
BASE AND
SLEEVE)

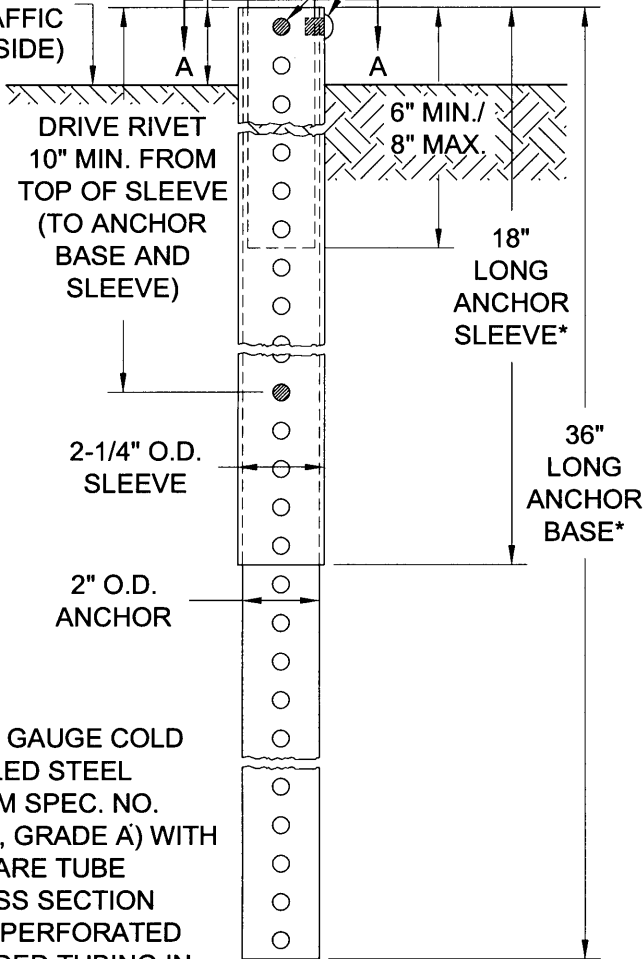
2-1/4" O.D.
SLEEVE

2" O.D.
ANCHOR

* - 12 GAUGE COLD
ROLLED STEEL
(ASTM SPEC. NO.
A446, GRADE A) WITH
SQUARE TUBE
CROSS SECTION
AND PERFORATED
WELDED TUBING IN
GALVANIZED FINISH
CONFORMING TO
ASTM SPEC. NO.
A525 COATING
DESIGNATION G90.

7/16"Ø PERFORATIONS, BACK-TO-BACK, ALONG FULL
LENGTH AND SIDES OF ALL MEMBERS* AT 1" O.C. (TYP.)

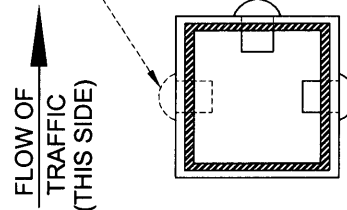
INSTALL 3/8" DRIVE RIVETS (TYP.): ONE ON BACKSIDE
OF POST, AND ONE ON SIDE OF POST AS SHOWN ON
SECTION A-A, OR AS DIRECTED BY THE CITY ENGINEER



NOTES:

1. FOR INSTALLATION ON UNDISTURBED EARTH OR CONCRETE SIDEWALK. DISTURBED EARTH REQUIRES A COMPACTION OF 95% AROUND ITS SURROUNDING AREAS.
1. TELESCOPE THE ANCHOR SLEEVE OVER THE ANCHOR BASE UNTIL BOTH TUBES ARE FLUSH AT THE TOP AND THE PERFORATIONS ALIGN.
2. USE DRIVING CAP TO PROTECT THE END OF ALL MEMBERS WHEN THE ANCHOR ASSEMBLY IS BEING DRIVEN INTO THE GROUND.
3. STABILIZATION ANCHOR SLEEVES SHALL BE USED IN ALL AREAS WITH SOFT, LOOSE OR UNSTABLE SOILS.
4. SEE ST-6 FOR STREET SIGN DETAIL.

RIVET LOCATION WHEN SIGN
POST IS ON THE LEFT SIDE OF
TRAFFIC



RIVET LOCATION
SECTION A-A



**ENGINEERING
DEPARTMENT**

ROADSIDE BREAKAWAY SIGN POST

John E. Stevenson
JOHN E. STEVENSON CITY ENGINEER

DATE: NOV. 30, 1998
REVISED: OCT. 31, 2000

SHEET NO.
ST-13