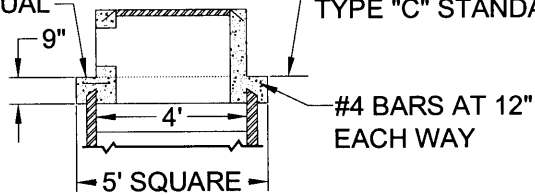


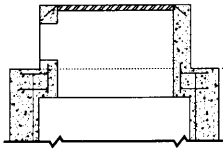
WHEN INLET IS PRECAST, USE 56" Ø
 PRECAST TRANSITION SLAB SANTA ROSA
 CAST PRODUCTS CO. DWG. NO. 846CC3
 OR APPROVE EQUAL

ALL DIMENSIONS ABOVE THIS
 LINE ARE IDENTICAL TO A
 TYPE "C" STANDARD INLET

ALL DIMENSIONS
 ABOVE THIS LINE
 ARE IDENTICAL
 TO A TYPE "C"
 STANDARD INLET



TYPE "C" OPENING
ON PRECAST MANHOLE BARREL



TYPE "C" OPENING
ON MANHOLE BASE

NOTES:

1. CONSTRUCTION JOINTS ARE OPTIONAL WHERE SHOWN. OTHER LOCATIONS ARE SUBJECT TO THE APPROVAL OF THE CITY ENGINEER. KEY DIMENSIONS - 3/4" TO 2-1/2".
2. CLEARANCE SHALL BE 1-1/2" FOR ALL REINFORCING STEEL.
3. INLET AND OUTLET PIPES SHALL NOT INTERCEPT A BOX THROUGH A CORNER. IF THE PIPE IS TOO LARGE OR THE SKEW ANGLE IS TOO GREAT TO PERMIT THE OPENING TO BE MADE IN A SINGLE WALL, USE A MANHOLE BASE WITH A TYPE "C" INLET OPENING ON TOP.
4. WHEN DIMENSION "H" EXCEEDS 4', USE A MANHOLE WITH A TYPE "C" INLET OPENINGS ON TOP.
5. LOCATION AND SIZE OF OPENINGS SHALL BE AS SHOWN ON PLANS OR AS OTHERWISE DETERMINED BY THE CITY ENGINEER.
6. ALL INLETS SHALL BE CONSTRUCTED WITH GRATE UNLESS THE INLET IS TO BE IN PEDESTRIAN AREA, THEN A COVER SHALL BE USED.
7. PRECUTS INLET, CONFORMING TO SANTA ROSA CAST PRODUCTS CO. DRAWING NO. 846CCI, OR EQUIVALENT, CAN BE SUBSTITUTED FOR CAST-IN-PLACE INLET.

(Not To Scale)



**ENGINEERING
 DEPARTMENT**

TYPE "C" INLET - SECTION & NOTES

[Signature]
 JOHN E. STEVENSON CITY ENGINEER

DATE: MAR. 30, 2001

REVISED:

SHEET NO.

SD-16b